

Percentages

Colours	Number of children	Percentage of total
Blue	20	10
Red		40
Pink	60	
Purple		20
Total:	200	

Tip:

To work out the percentage:

**Number of children divided
by the total X 100.**

$$20/200 = 0.1$$

$$0.1 \times 100 = 10$$

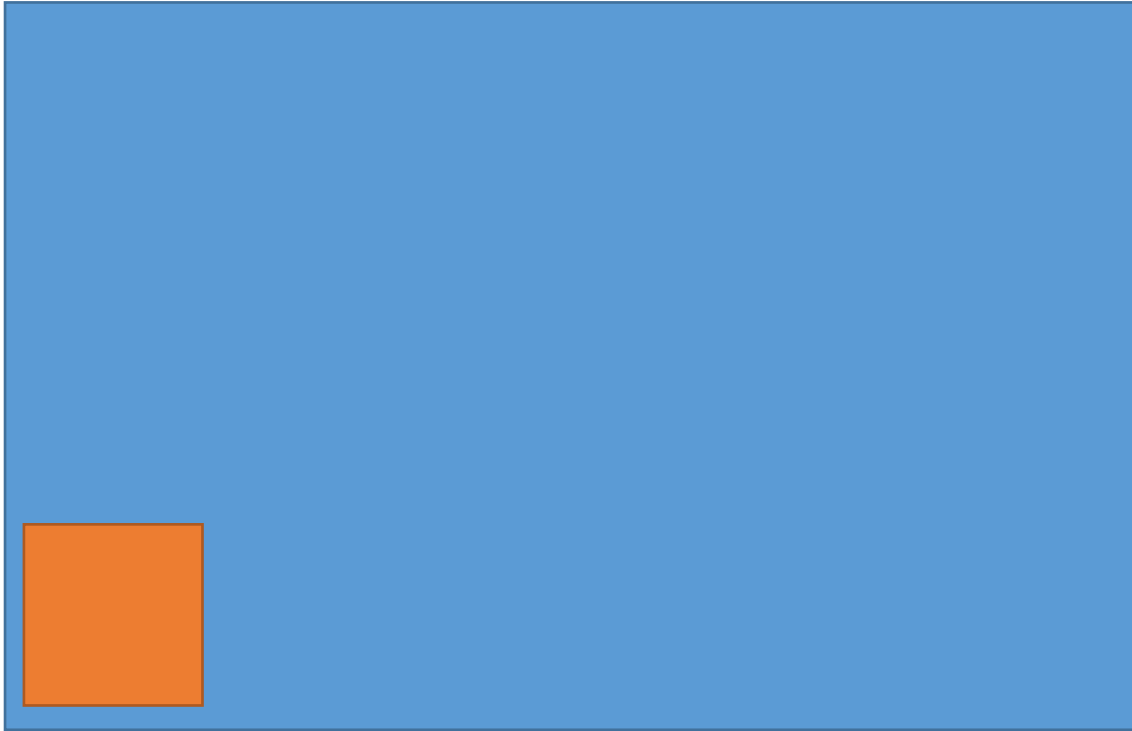
Percentages

Colours	Number of children	Percentage of total
Blue	20	10
Red	80	40
Pink	60	30
Purple	40	20
Total:	200	100

**Check that you
numbers add
up to the total
given**

**Percentage
should always
equal 100**

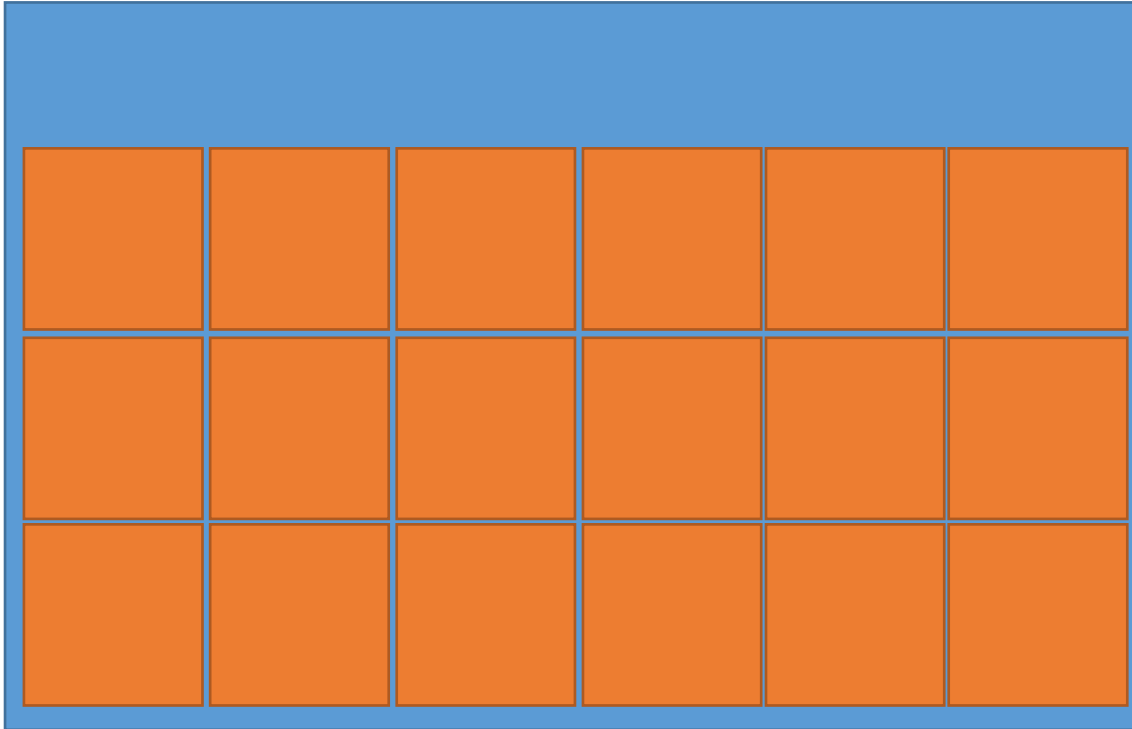
'Nesting' a shape – nesting is used to ensure minimal material is wasted when cutting out pieces.



For example: Pattern lay in Textiles.

How could you repeat the square to ensure the least amount of waste?

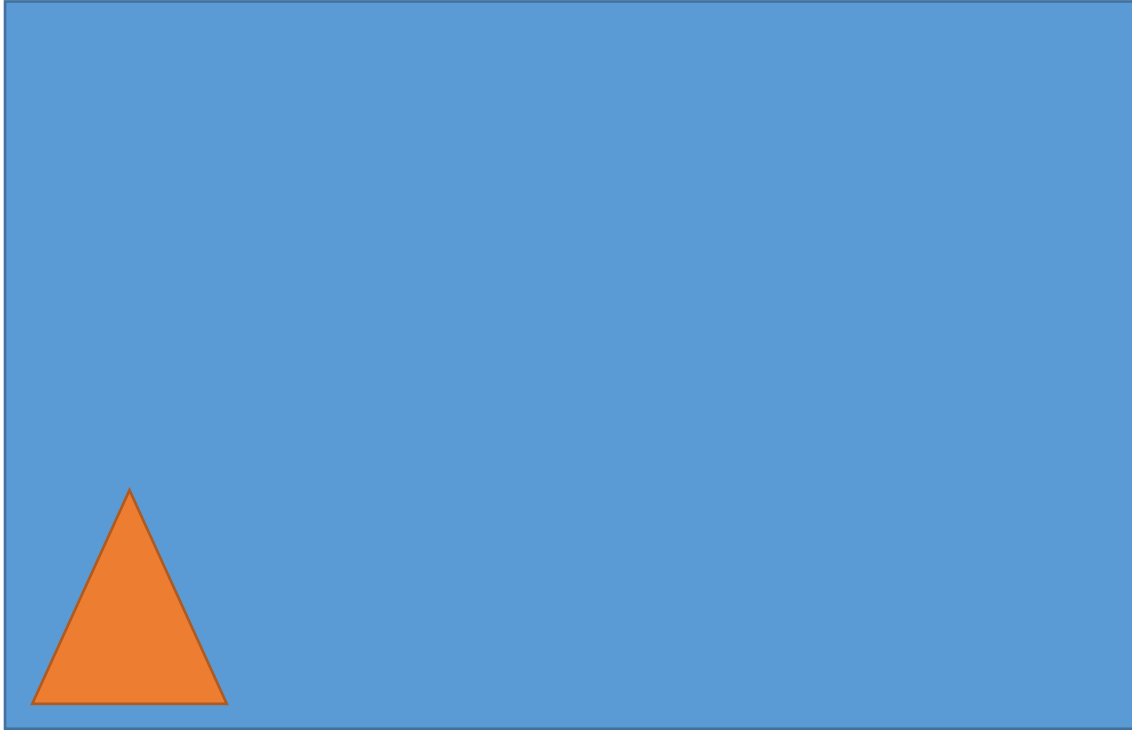
'Nesting' a shape – nesting is used to ensure minimal material is wasted when cutting out pieces.



For example: Pattern lay in Textiles.

How could you repeat the square to ensure the least amount of waste?

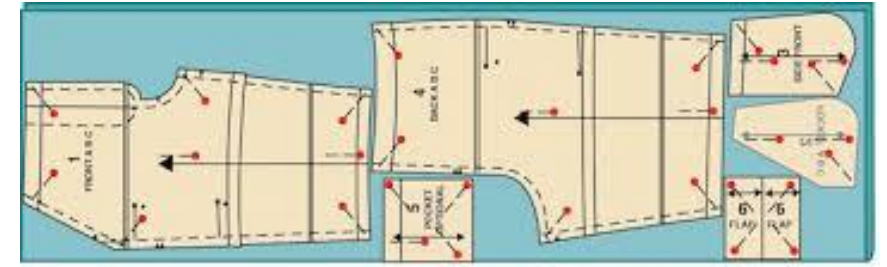
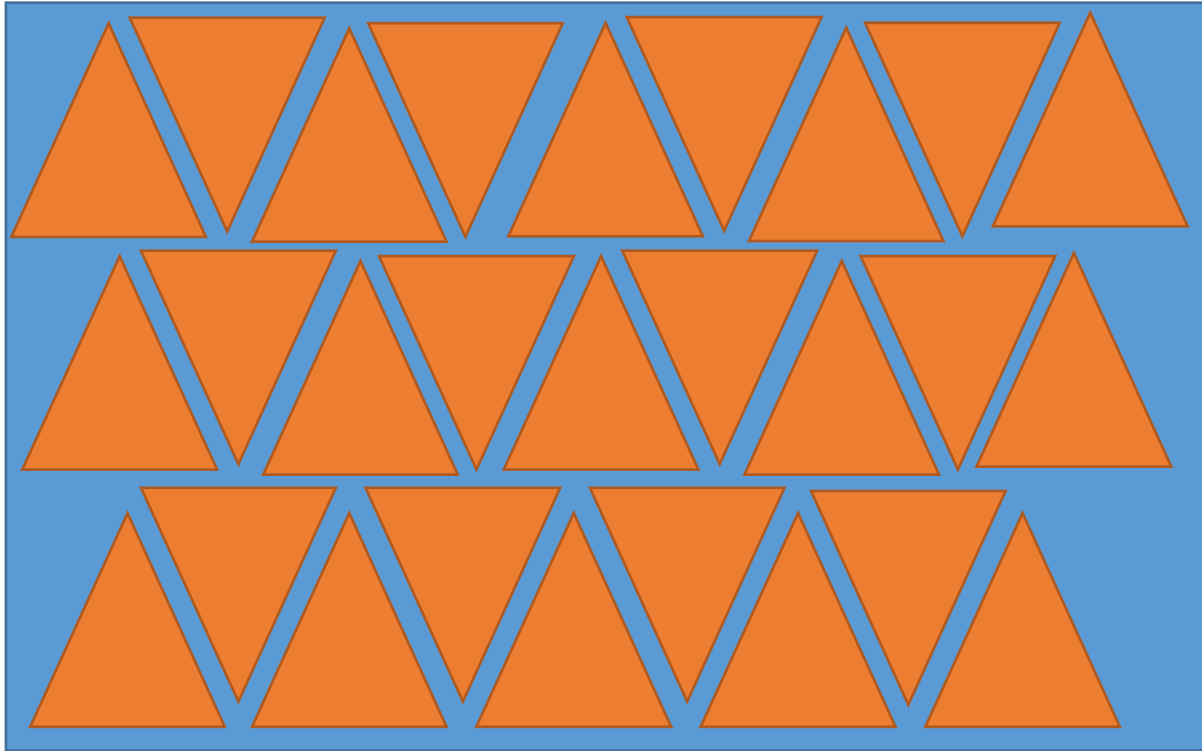
'Nesting' a shape – nesting is used to ensure minimal material is wasted when cutting out pieces.



For example: Pattern lay in Textiles.

How could you repeat the triangle to ensure the least amount of waste?

'Nesting' a shape – nesting is used to ensure minimal material is wasted when cutting out pieces.



For example: Pattern lay in Textiles.

How could you repeat the triangle to ensure the least amount of waste?